
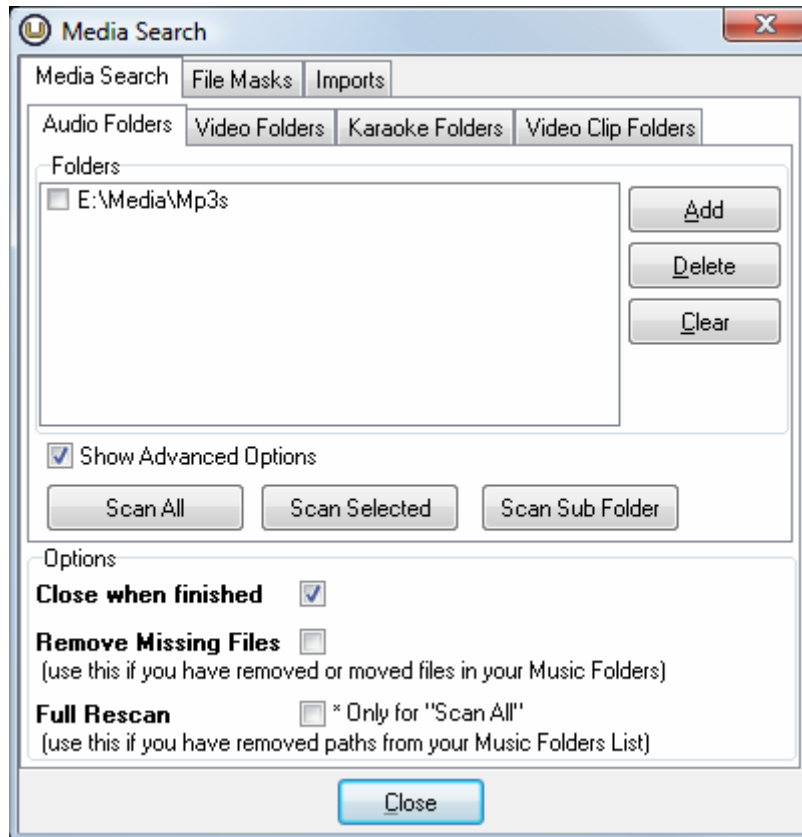


Ultimate Jukebox Quick Start Guide

Configuring Ultimate Jukebox

Before you can start listening to your music, you must first let Ultimate Jukebox know where your music files are stored. This is done by choosing Settings->Media Folders from the main menu. This will display the window shown below. (You can view the main menu by clicking

the  "Show Menu" button).



- Use the "Add" button to add folders to the list. You can add as many folders as you like by clicking the "Add" button and then locating the folder. Folders are searched recursively, that is, all folders within the folders you choose are searched for valid media files as well. You do not have to select them individually. You could simply specify a root folder (eg. C:\) which will search an entire drive for files, however this will be a slower process.
- Use the "Delete" button to remove the selected folder from the list.
- Use the "Clear" button to remove all folders from the list (and start over).

When your media folders have been added :

- Click "Scan All" to search all folders for valid media files
- Click "Scan Selected" to search only the "ticked" folders for valid media files
- Click "Scan Sub Folder" to locate a folder within the highlighted folder and only scan that for valid media files

Unless your collection is very large (5000+), you will probably only need to use the "Scan All" option. The other options are available to save time when required.

A 'Scan All' will scan through all of your media folders and locate all of your media files, however it will only read tag & file information from those files that are not already in your library or have been modified since the last scan. Note that some TAGGING applications do

Ultimate Jukebox

THE ULTIMATE PC JUKEBOX

not change the modified time and date of your media files when they update tag information. In this case, you will always have to do a "Full Rescan" -- see below.

To totally refresh your media library, check "Full Rescan" and click "Scan All." This will clear your media library and read everything back in.

Navigating the Ultimate Jukebox interface

Shown below is a scaled down screen capture of Ultimate Jukebox's main window. Below this, you will find descriptions of all of the labelled components.



Title Bar: this has the same functionality as the title bar on a regular window. Click and hold the left mouse button to move the window around the screen. The buttons in the top right corner (right to left) are Exit, Maximize (Full Screen), Help, Minimize, and Hide/Show Main Menu. The main menu can also be displayed by right-clicking anywhere on the title bar. Left-clicking on the title bar will bring up the Ultimate Jukebox version and registration details, as well as contact information.

Main Menu: this has the same functionality as the main menu of a regular Windows program. All actions and options available in Ultimate Jukebox can be reached through the Main Menu.

Song Title Panel: this displays the title and artist of the track currently playing. It can also be set to scroll its display. Scrolling of the song title can be toggled by a single click on the song title itself.

Control Panel: this contains Play, Skip, Stop & Pause buttons as well as the Track search, Queue CD, Add Selected and Add All buttons.



Jukebox List: this window displays a tree of the English alphabet, the numbers 0 to 9, as well as additional headings (other, no artist, compilations, genres & playlists). Under each letter of the alphabet is a list of Artists whose name starts with that letter. Under each artist is a list of all the "Virtual" albums/CDs that you have of that artist.

If the artist's title does not start with a letter of the alphabet then it will be found under the "other" heading. The "no artist" heading stores music files that have their ARTIST tag empty.

Ultimate Jukebox

THE ULTIMATE PC JUKEBOX

The "Compilations" heading stores a list of Albums/CDs that Ultimate Jukebox has determined to be a Compilation Album - this means that the ARTIST tags for all tracks with this ALBUM tag are not identical AND all of these file are stored in the same folder on the disk.

Clicking on the elements in the artist list will cause an appropriate list of tracks to appear in the track list (see "Track List" below).

- The 'Queue CD' button can be used if you wish to add an entire album to the Queue List. To do this, select an album in the Artist List and click the 'Queue CD' button.
- The 'Track Search' button is used if you want to search for a specific song by it's title.

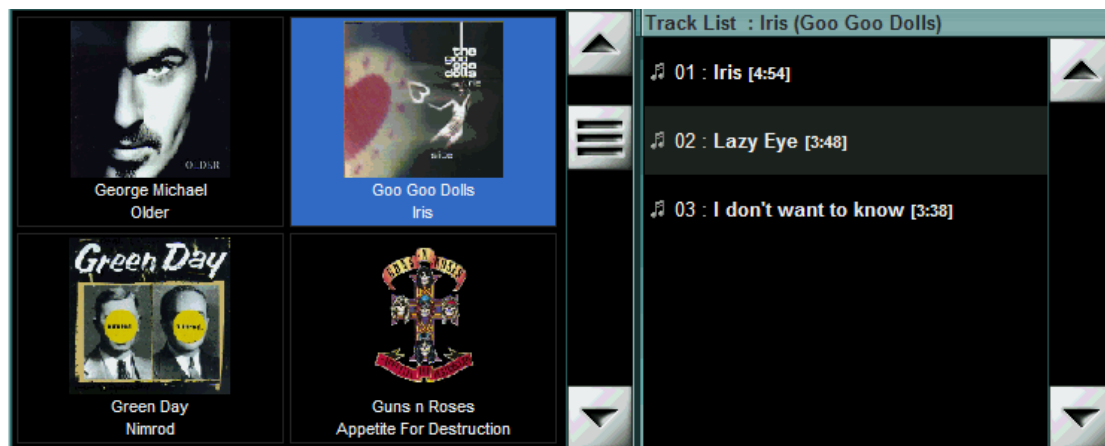
Track List: if an artist is selected in the Artist List window then this window will list all tracks by that artist. If an album/cd is selected in the Artist List window then this window will list all tracks on that album/cd. If one of the letters of the alphabet (or numbers 0-9) is selected in the Artist List window, then a list of tracks starting with that character will appear in the track list.

The "Add Selected" and "Add All" buttons are used to add songs from the Track List to the Queue List.

Queue: this is a list of tracks queued to be played. Tracks in the queue take precedence over other playlists.

Cover Art: Ultimate Jukebox can display the album covers for your music.

Cover Art View: Ultimate Jukebox can also display a thumbnail view of your cover art so that you can choose your music by clicking on your album covers. Choose View->Cover Art View from the main menu to display the cover art view instead of the jukebox list view.



How Play Order is Determined

Ultimate Jukebox differs from other music players in the way that it handles track selection. Most players only offer a playlist and some sort of random song selection and maybe the option to choose tracks based on genre and other TAG data.


Ultimate Jukebox has a multi-layered playlist implementation. This means that Ultimate Jukebox uses multiple "internal" playlists which have an order of precedence. These are (from Highest to Lowest) :

1. The Queue : this is the only list visible in the main display window (at the bottom). The tracks that you select using the various [Track Location](#) methods will end up in the queue. Adding a track to the queue does not make it play immediately - the track that is currently playing will finish, then the first song in the queue will be "dequeued" and played. If there are no tracks left in the queue, track selection is passed to the next playlist level.
2. The Stacker : the stacker is an implementation of the Global List (see below) but only for the virtual CDs and playlists that are in it. If the stacker is enabled, and is not empty, then track selection will not be passed below the stacker.
3. Playlist Collection : These are playlists that have been saved and are preloaded when Ultimate Jukebox is started. You can switch between preloaded lists or turn them off. If there is a preloaded list activated and set to 'loop' (repeat), track selection will not be passed below.
4. The Global List : this is a list representing your entire music collection. If track selection reaches this point, tracks are chosen at random from the global list.

Ultimate Jukebox was designed to turn your PC into a fully functional jukebox. It will bring your entire Mp3, OGG, WMA & WAV music collection together in an easy to use and intuitive interface, and will give you instant access to your entire music collection.

The task of locating the music you want to hear becomes a simple and logical process. With multiple playlist levels, track selection methods, full screen capability, and touch screen compatibility, Ultimate Jukebox can be the perfect addition to your HTPC (Home Theatre PC) and home stereo system.

Maximizing Display Space

Ultimate Jukebox was designed to run as a full-screen application. Therefore, if you haven't done so already, the first thing that you should do to allow more room for the information to be displayed is to click the  Maximize button.

If you still require more space (this may be the case if you are running at lower screen resolutions), then you can hide various sections of the main window to allow more viewing area for the Jukebox and Track lists.

You can hide the Song Title, Stacker, Queue Controls, and Cover Art Panels by selecting the appropriate menu options under the View option in the main menu. Some of these options also have key combination shortcuts which are displayed with the menu items.

In addition, the "divider" bars between the three main lists (Artist List, Track List, and the Queue List) can be moved (place your cursor over the bar), which allows you to resize these lists for your specific needs.

Settings->Control Panel Style 1/2 and Settings->Queue Controls Style 1/2 also make some layout changes that may help in gaining some more screen space.

How to display Album Cover images

Ultimate Jukebox can display album covers for your music. JPEG images can be read from id3v2 tags in mp3 files, and JPG or BMP files can be loaded from folders to be displayed. You can store your Album Cover images all in one folder or you can store them with the tracks themselves. Images can be displayed in the main Ultimate Jukebox window and are also displayed when the Screen Saver is active.

Choose Settings->General from the Main Menu to open the Preferences Window.

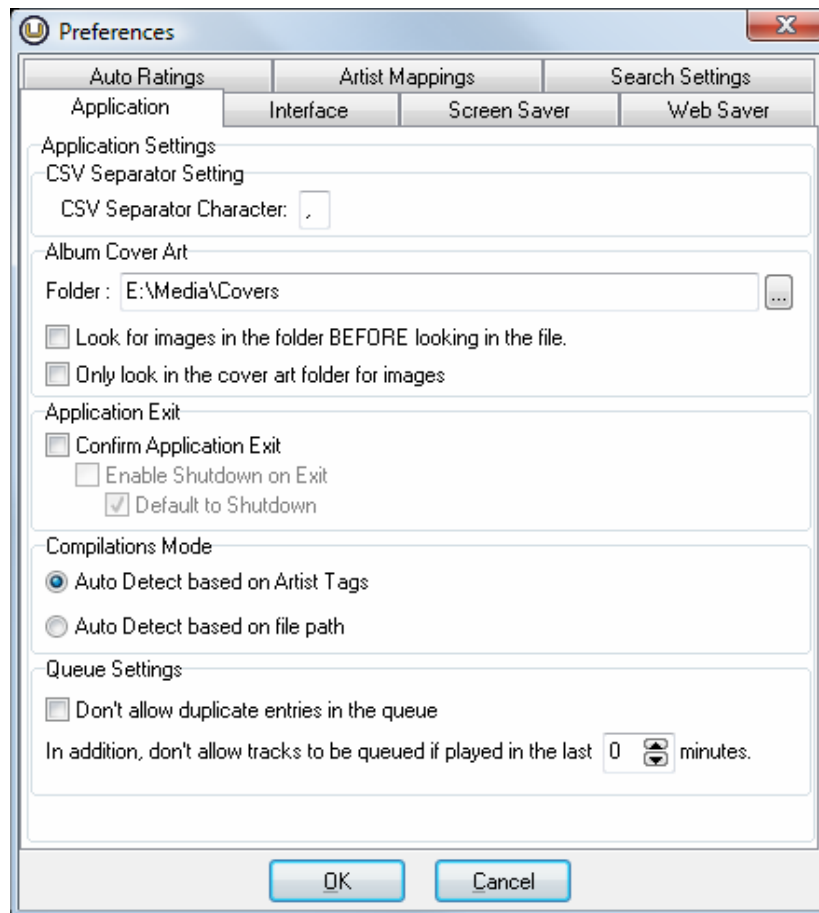


Image filenames can be of any of the following forms:

- Artist - Album
- Album - Artist
- Artist - (Album)
- Album - (Artist)
- (Artist) - Album
- (Album) - Artist
- (Artist) - (Album)
- (Album) - (Artist)
- Compilation - Album
- Compilation - (Album)
- Soundtrack - Album
- Soundtrack - (Album)
- Album
- Artist
- Folder (the word "folder")

Touch Screen Settings

While you don't necessarily have to do anything to make Ultimate Jukebox work with a touch screen there are some settings that are worth changing to make Ultimate Jukebox more "Touch Screen Friendly".

- Settings->Control Panel Style 2
- Settings->Queue Controls Style 2
- Settings->General->Interface (tab) "Use on screen keyboards", with a key size of at least 50.
- Settings->Skins->Colors & Fonts (tab) "Use Custom Item Height" with a setting of at least 50
- Settings->Skins->Skins (tab) select the "UJ 2007 - Large Title" skin (and click "Load Skin")